

# TechLINK

Issue No 128

JANUARY 2005

## Registrations

now open ...

The **Clinical Management of Upper Limb Amputees Course** will run at CGMC from 4–8 April, 2005.

This 5-day intensive AFRM and AOPA accredited Course is designed to address the needs of rehab registrars, prosthetists, physiotherapists, and occupational therapists working with amputee clients.

To secure your place at the Course:

Tel: (03) 9905 4145

Fax: (03) 9905 4069

Email:

[maree.boehm@eng.monash.edu.au](mailto:maree.boehm@eng.monash.edu.au)

Details on our website at  
Calendar of Events

## Prosthetic Design System

The Prosthetic Design System (PDS) is a software tool developed to aid health professionals in the design process of prosthetic limbs.

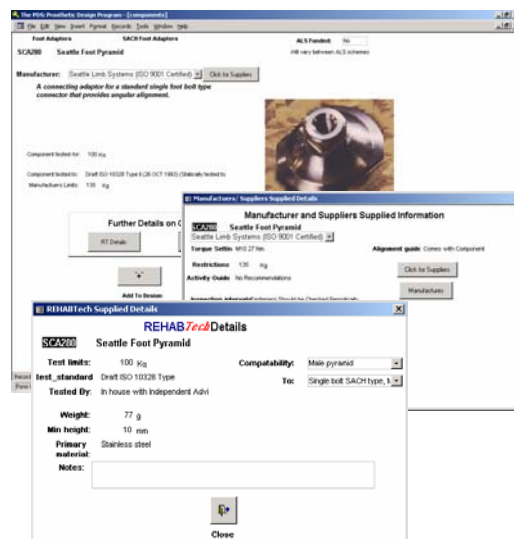
The program keeps track of data of selected components — weight, height, load capacity, cost — allowing mix and match of components that are structurally compatible.

The finished design can be directly linked to a patient's record enabling accurate record-keeping of components used and when integrated with a stock inventory, the Prosthetic Design System will update stock levels automatically.

PDS can also be linked to the **TechGuide**, the single largest independent source of product information on prosthetic and orthotic components.

PDS updates hazard warnings on componentry — a useful risk-management feature.

To learn more about PDS or the **TechGuide**, either visit our website or contact us direct.



REHAB Tech, Centre for Biomedical Engineering,  
Dept Electrical & Computer Systems Engineering, Building 35, Room G19,  
Monash University, Clayton Vic 3800, Australia.  
Telephone: +61 3 9905 3466, Facsimile: + 61 3 9905 4069, e-mail: [REHAB.Tech@eng.monash.edu.au](mailto:REHAB.Tech@eng.monash.edu.au)

INTERNET - <http://www.monash.edu.au/rehabtech/>



MONASH University

## Job WATCH

### Burnie/Launceston Tasmania

Orthotist/Prosthetist (Relief) Community and Health Services (Public Sector) Award, Professional Stream Level 1.  
Commencing 2 February 2005 to 16 June 2005. Duties:- To perform patient assessments and institute therapeutic and prophylactic procedures on clinical cases, principally through the application of orthoses and prostheses in the treatment of human musculoskeletal disorders to contribute to the enhancement of client treatment and recovery processes. Enquiries to Weston Wiggins, Department of Health and Human Services, phone (03) 6222 7375, email [weston.wiggins@dhhs.tas.gov.au](mailto:weston.wiggins@dhhs.tas.gov.au).

**For the latest positions and detailed information on vacancies as they occur, visit our website:**

Just follow the links from our home page: [www.monash.edu.au/rehabtech](http://www.monash.edu.au/rehabtech)

## COMING EVENTS

Calendar of events – now on the web – [www.monash.edu.au/rehabtech](http://www.monash.edu.au/rehabtech)

<b>10–14 January, 2005</b>	<p><b>Lower Limb Prosthetics Course NSW</b></p> <p>Offered at University of NSW, Randwick, for rehabilitation health professionals. Contact Flor Hajjar on (02) 9382 5847 or email <a href="mailto:hajjarf@sesahs.nsw.gov.au">hajjarf@sesahs.nsw.gov.au</a> for details.</p>
<b>11 February, 2005</b>	<p><b>Wheelchair Safety &amp; Standards Monitoring</b></p> <p>Third National Symposium in Brisbane. For details, contact Nina Lenz via fax (02) 6273 2358 or mail 11 National Ct., Barton ACT 2600.</p>
<b>14–18 February, 2005</b>	<p><b>Lower Limb Prosthetics &amp; Amputee Rehabilitation Victoria</b></p> <p>Annual Course at Caulfield General Medical Centre for rehab health professionals interested in team management of amputee clients. <b>Early Bird fee available till 20 December, 2004. Contact REHABTech</b></p>
<b>4 March 2005</b>	<p><b>Material Science &amp; Handling Technician Course</b></p> <p>REHABTech Supporter Course — contact us at (03) 9905 3466.</p>
<b>4–8 April 2005</b>	<p><b>Clinical Management of Upper Limb Amputees Victoria</b></p> <p>Annual Course for rehab health professionals with focus on team management of amputee clients. Register now for <b>early bird fee</b> on (03) 9905 4145 at REHABTech.</p>
<b>Dates to be announced</b>	<p><b>REHABTech Videoconference Lecture Series 2005</b></p> <ul style="list-style-type: none"> <li>▪ Stance Control Orthoses</li> <li>▪ The Science Behind Gel Liners</li> <li>▪ Charcot Foot—Orthotic management of diabetic neuropathic arthropathy</li> <li>▪ Unique Upper Limb Prosthetic Cases</li> </ul>

REHAB Tech, Centre for Biomedical Engineering,  
Dept Electrical & Computer Systems Engineering, Building 35, Room G19,  
Monash University, Clayton Vic 3800, Australia.  
Telephone: +61 3 9905 3466, Facsimile: + 61 3 9905 4069, e-mail: [REHAB.Tech@eng.monash.edu.au](mailto:REHAB.Tech@eng.monash.edu.au)

INTERNET - <http://www.monash.edu.au/rehabtech/>