

Internet Explorer 6.x Configuration Instructions

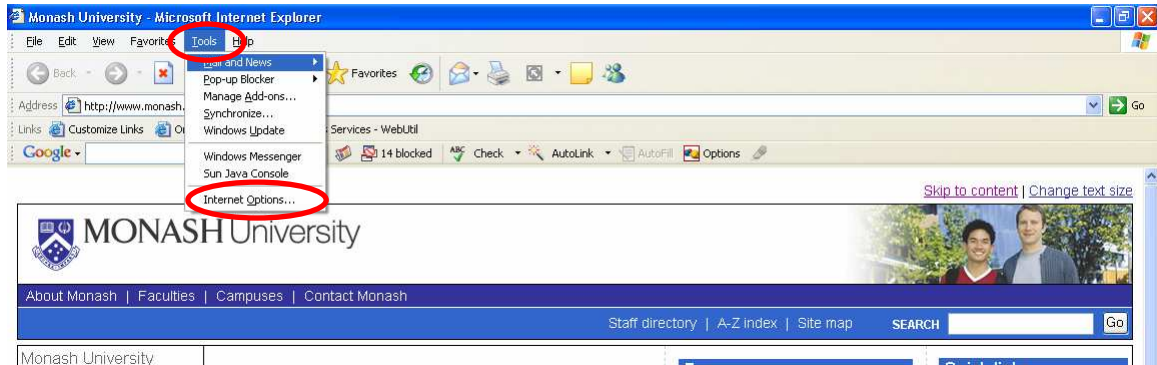
Prepared by CALT MUSO Support

Last Revision 7th September 2006

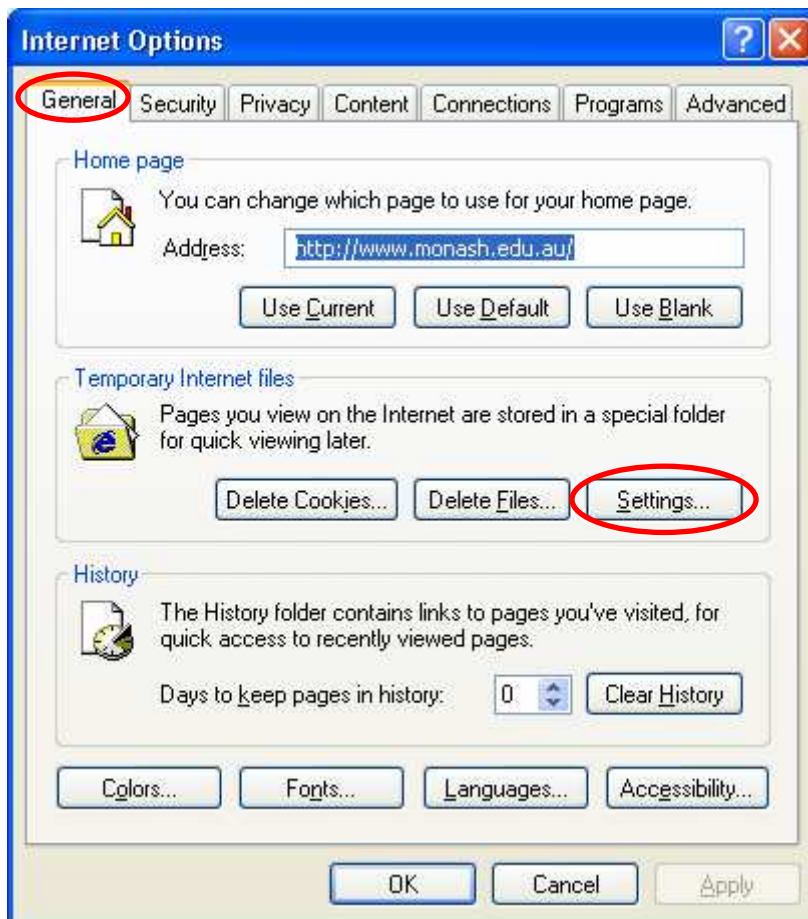
NOTE:

Internet Explorer 6.0 comes standard with Microsoft Windows install.

Setting up Internet Explorer to use MUSO

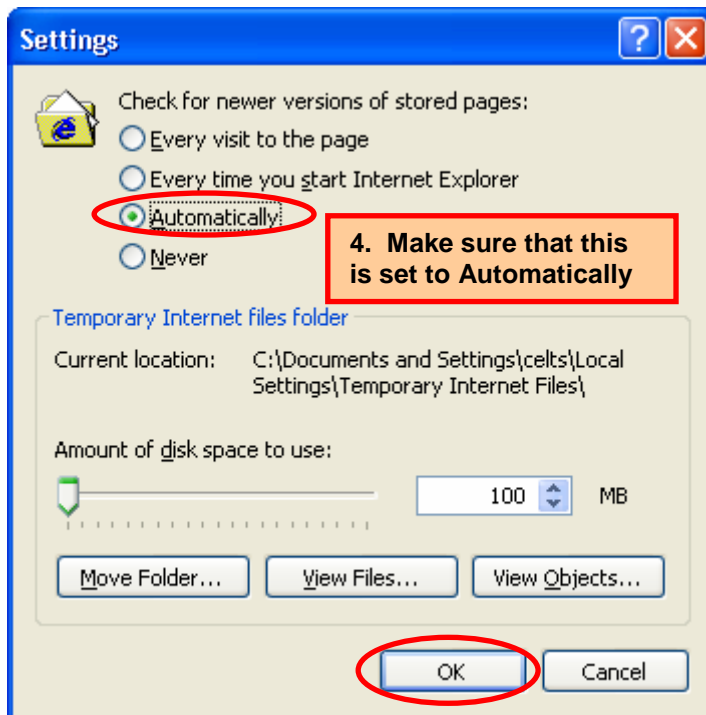


1. Click “Tools” menu and select “Internet Options”.



2. Select the “General” tab.

3. Under **Temporary Internet Options**, select **Settings**.



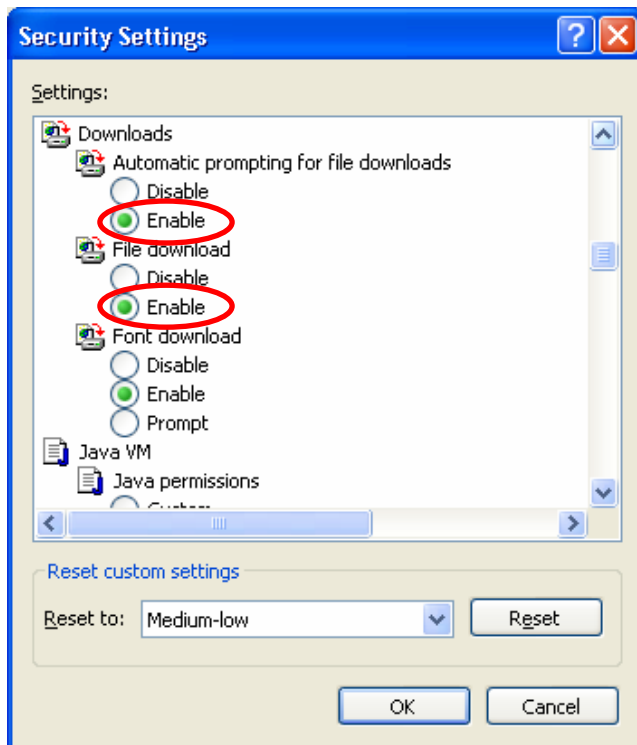
4. Under *Check for newer versions of stored pages*, click “**Automatically**”,

5. Click “OK”.



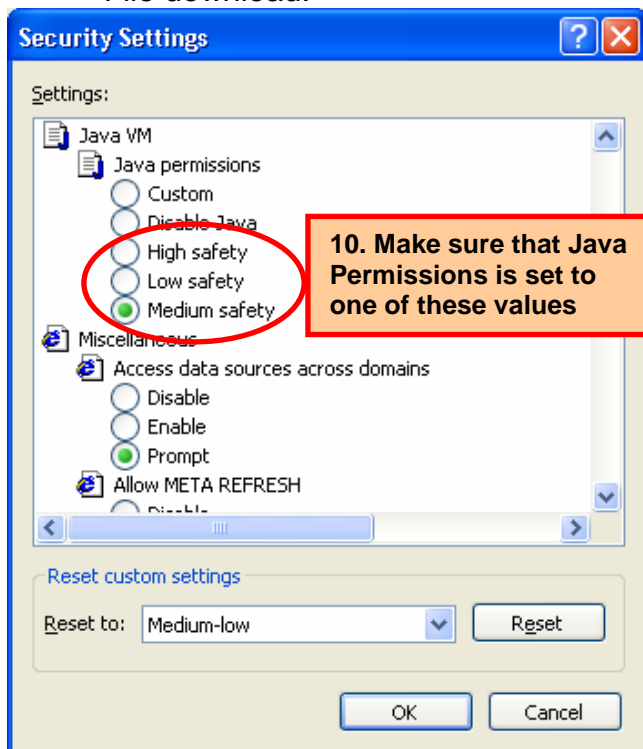
6. Select the **Security** tab at the top of the window.

7. Select the **Custom Level** button.



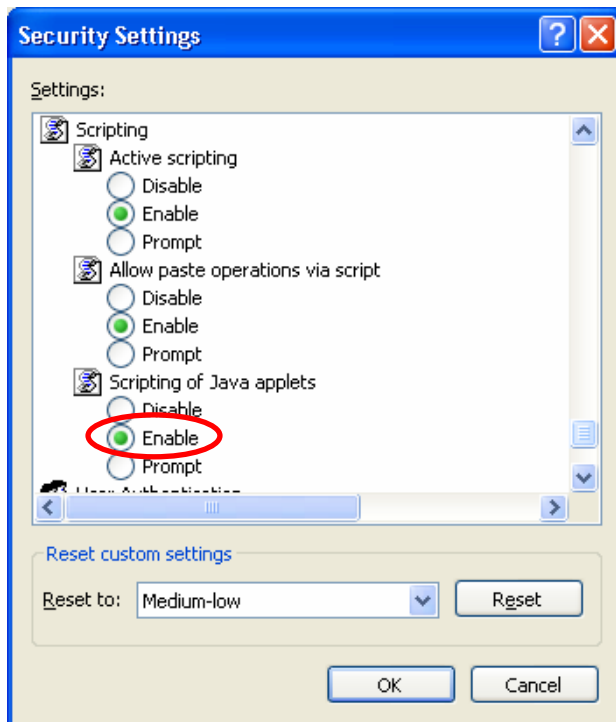
8. If you have installed the latest service pack from Microsoft, scroll down to **Downloads** and click “**Enable**” for the following items:

- Automatic prompting for file downloads
- File download.

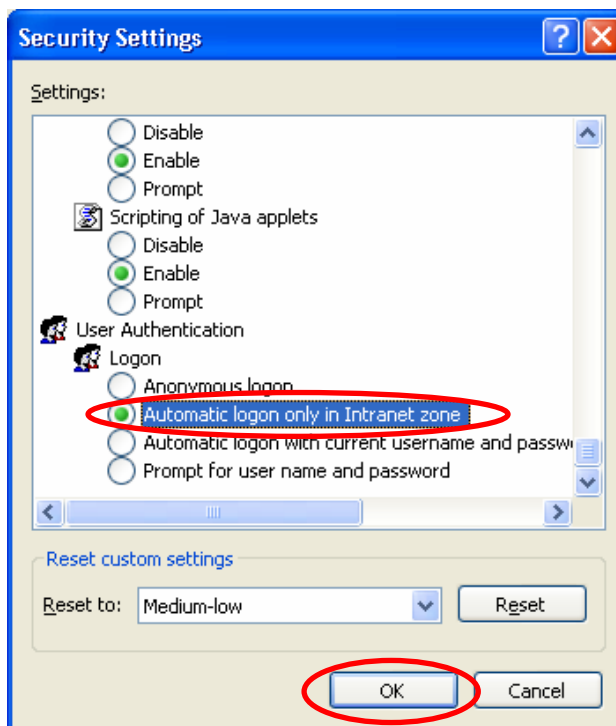


9. Scroll down to **Java VM**

10. For Java Permissions select High safety, Low safety or Medium Safety

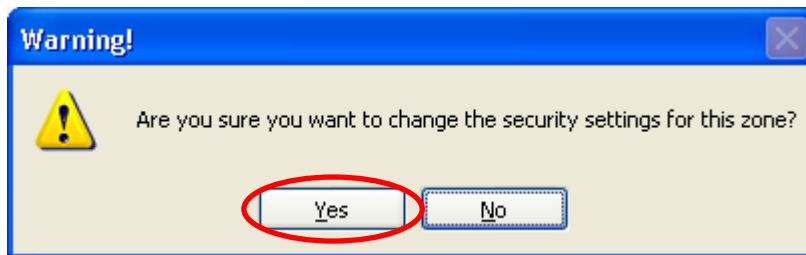


11. Scroll down to **Scripting** and under **Scripting of Java applets** click **Enable**.

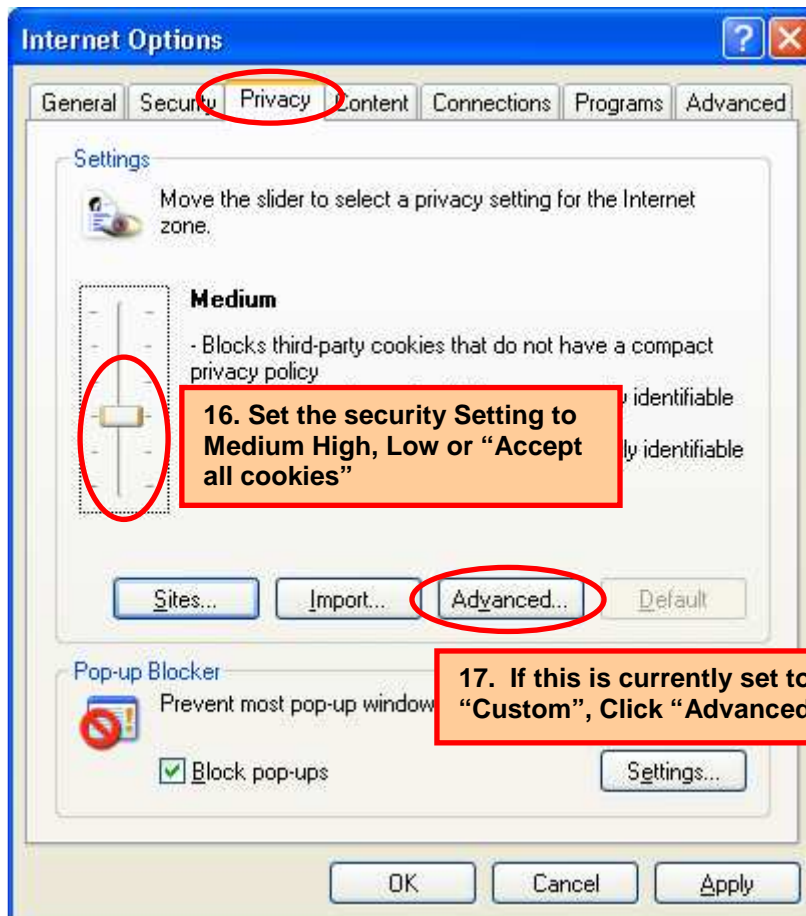


12. Scroll down to **User Authentication** and click “**Automatic logon only in Intranet zone**”.

13. Click “**OK**”.



14. The following warning will appear. Click “Yes”



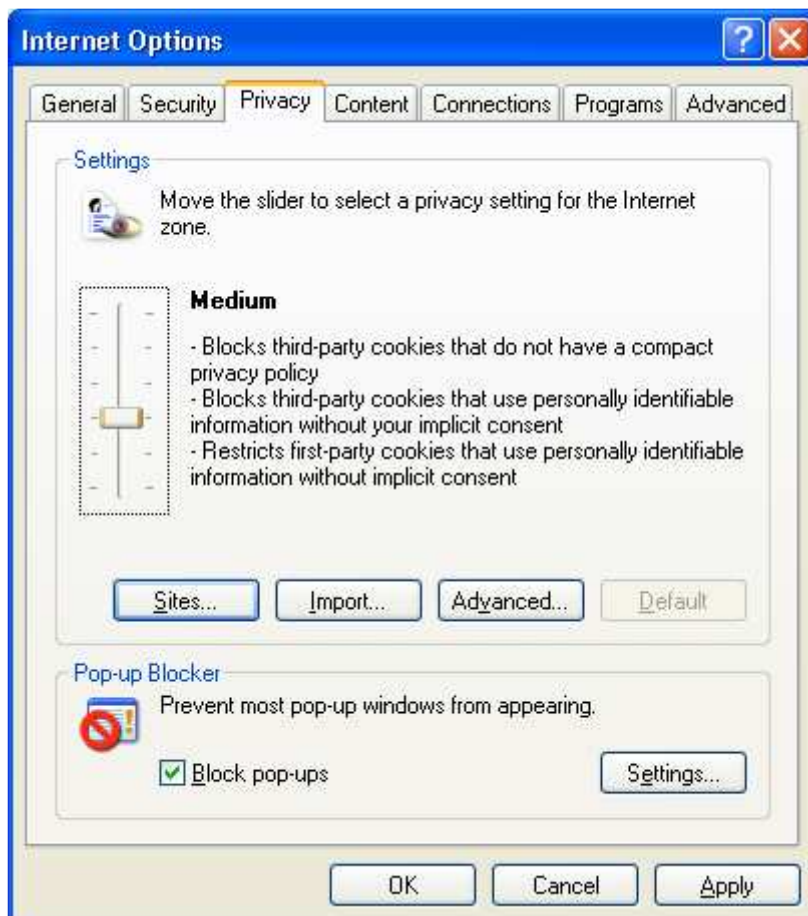
15. In the same Internet Options panel, select the **Privacy** tab at the top of the panel.

16. If using the default settings, set the slider to “**Medium High, Medium, Low, or Accept All Cookies**”. (Go to Step 21)

17. If using **Custom** settings click “**Advanced**”



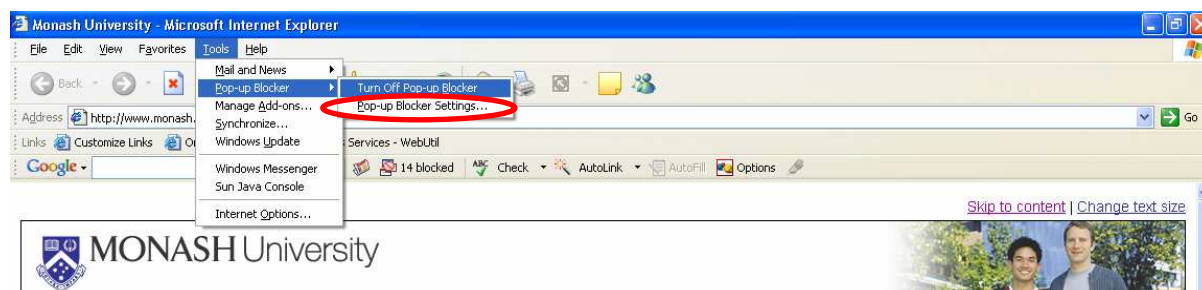
18. Check the box for **Override automatic cookie handling**.
19. Check the box for **Always allow session cookies**.
20. Select **OK**.



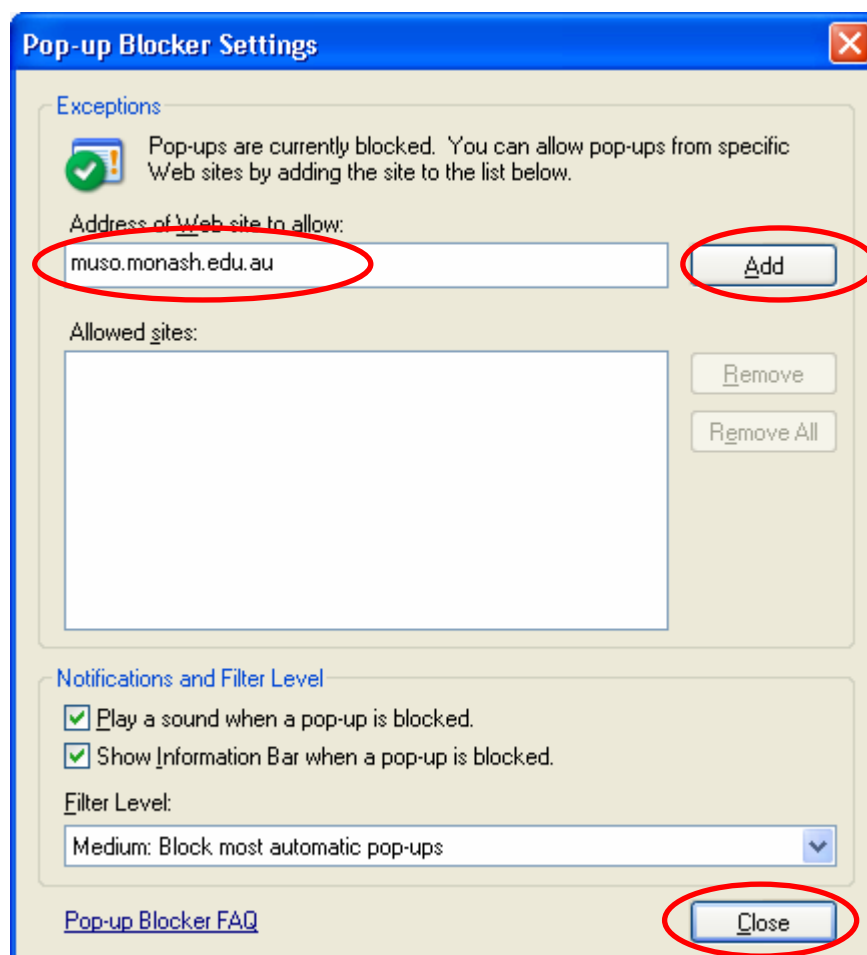
21. Click "**Apply**" and then "**OK**".

Section 2 - Enable Pop-ups

Note: This will only apply if you have updated Windows XP to Service Pack 2. If you cannot see the Pop-up Blocker in the menu, then you do not need to worry about this step.



1. Click “**Tools**” menu, select “**Pop-up Blocker**” and click “**Pop-up Blocker Settings**”.



2. Type “**muso.monash.edu.au**” in the **Address of Web site** to allow box.

3. Click “**Add**”.

4. Click **Close**.

If you are having problems with MUSO please check the following site for general browser set-up:

<http://www.monash.edu.au/muso/support/students/browserset.html>

Or the MUSO Troubleshoot Page:

<http://www.monash.edu.au/muso/support/students/troubleshoot.html>

Or you can contact MUSO Support.

CALT MUSO Support contact details			
Website	http://www.monash.edu.au/muso/support		Phone: (+61 3) 990 31268
Jobdesk	http://jobdesk.med.monash.edu.au/login/index.cfm?jobdesk_id=14		
Email	muso.support@calt.monash.edu.au		
	Operational hours – Local time		
	Monday – Thursday	Friday	Saturday and Sunday (Only open during teaching period)
Australia (GMT +10)	8am – 10pm	8am – 8pm	1pm – 5pm
Malaysia	6am – 6pm	6am – 6pm	11am – 3pm
South Africa	11pm – 1pm	11pm – 11am	4am – 8am (Sunday and Monday)