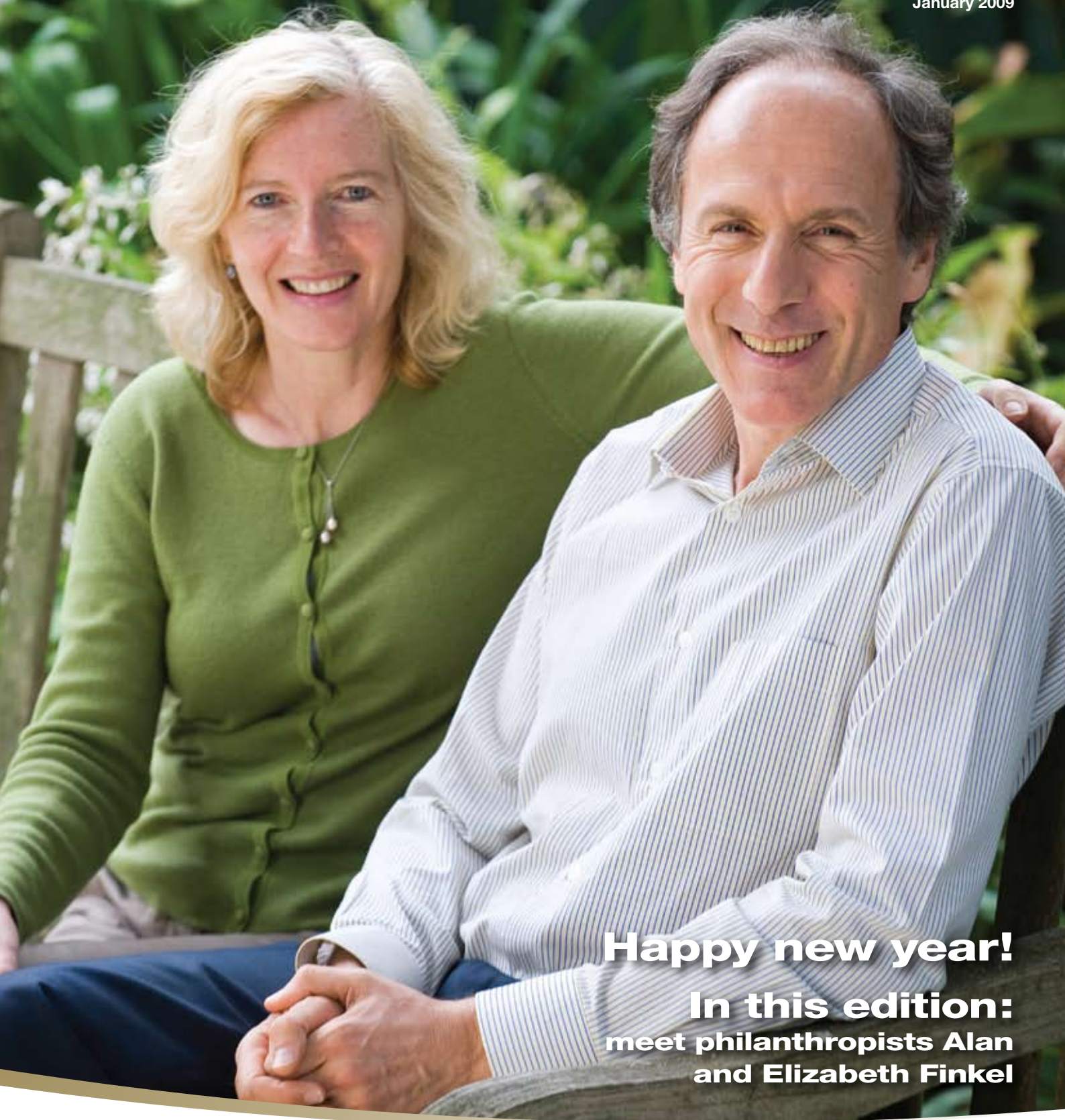


# Thanks!

The newsletter for Monash University's donors and volunteers  
January 2009



**Happy new year!**

**In this edition:  
meet philanthropists Alan  
and Elizabeth Finkel**

# Thanks! from the Vice-Chancellor

Happy new year and welcome to the first edition of **Thanks!** – Monash University's newsletter to recognise the contribution of our donors and volunteers.

Thanks is such a simple word, but one that is often neglected. Monash University understands the importance of the word, and this newsletter is just one of the ways we express our gratitude to our volunteers and donors.

In **Thanks!** you will read about inspiring donors. This edition showcases the people and organisations who have a significant impact on Monash University, through philanthropy. **Thanks!** profiles the generosity of individuals such as Alan and Elizabeth Finkel and Fiona and Andrew Cochrane, as well as the philanthropy of some of Melbourne's most prominent foundations and trusts.

This issue of **Thanks!** also pays tribute to the many volunteers to Monash University. These alumni, supporters and friends of the University give their time, energy, expertise and dedication. I am sure that you will be inspired when you read about Alistair Lloyd's half century of commitment and the extraordinary contribution of the late Roslyn Smorgon AM.

I hope you enjoy reading the inaugural issue of **Thanks!**

Thank you for your continuing support of Monash University.

Professor Richard Larkins AO  
Vice-Chancellor and President  
Monash University



# Monash honours philanthropic leaders

Monash University has recognised two individuals who have contributed significantly to the Australian community.

In 2008, Monash conferred an honorary degree of Doctor of Laws on Dame Elisabeth Murdoch AC DBE and Sam Lipski AM.

The honorary degree is the latest in a long list of distinctions that Dame Elisabeth has received for her lifetime of community service.

She has made important contributions to a host of institutions including the Royal Children's Hospital, the National Gallery of Victoria, the Murdoch Children's Research Institute, the Australian Ballet, the Victorian Opera, the Royal Botanic Gardens, the Deafness Foundation, and the RSPCA, along with a number of Victoria's leading educational institutions.

Vice-Chancellor Professor Richard Larkins paid tribute to Dame Elisabeth's achievements.

"It is not only that the community, the state and the nation have received immeasurable benefits through all that Dame Elisabeth has done and continues to do in promoting research, in fostering health, in nurturing growth, and in creating beauty. It is also that her personal commitment and involvement has been made with a degree of warmth and humanity such as the world all too rarely sees," Professor Larkins said.



Dr Sam Lipski AM (HonLLD 2008)

Dr Lipski is a former journalist and media consultant, and has served the community as member of several educational boards and government advisory committees.

Dr Lipski is currently Chief Executive of the Pratt Foundation and an active volunteer at Monash University. He is a member of the Monash University Campaign Committee, a research associate in the School of Historical Studies and chair of the Australian Centre for Jewish Civilisation's Advisory Board.

Professor Larkins acknowledged Dr Lipski's outstanding contribution to the wider community.

"Sam Lipski's stellar national and international career as a journalist, spanning more than 40 years; his enduring and continuing commitment to education; his engagement with public life; and his ten-year role as Chief Executive of the Pratt Foundation which has enriched the life of our community by supporting initiatives of the highest national significance – define him as one of the outstanding Australians of his generation," Professor Larkins said.



Dame Elisabeth Murdoch AC DBE (HonLLD 2008) with Chancellor Dr Alan Finkel AM (left) and Vice-Chancellor Professor Richard Larkins AO

# Inspiring philanthropy

Dr Alan Finkel AM and Dr Elizabeth Finkel are leading donors to Monash University and the community through the Alan and Elizabeth Finkel Foundation.

In 2008 Alan Finkel (BE 1976, PhD 1981) became Monash University's Chancellor, the first alumnus to hold the position. Elizabeth Finkel is a noted science journalist and author.

The Finkels spoke to **Thanks!** about their philanthropy.

**You have recently made a significant philanthropic gift to create the Finkel Chair in Global Health in Monash University's Faculty of Medicine, Nursing and Health Sciences. What was the inspiration behind the theme of global health?**

**Dr Elizabeth Finkel:** I trained as a molecular biologist, but had I not gone in that direction my very strong interest was global development. It has always been an abiding interest.

When we set up the Foundation I was able to re-visit that interest, this time as a philanthropist. Our Foundation has always reflected Alan's compelling passions and my compelling passions. Also, through my work as a journalist I have been able to pay attention to global health issues.

There is also a more poignant reason why this theme was so relevant at this time. I was in Botswana in February doing research for a book I'm writing. It's about the impact of genetics [research] on medicine and agriculture. I spent a day with a doctor in an AIDS ward at Princess Marina Hospital.

Botswana is the showpiece of the world. They are the country that is rolling out free HIV medication to the people who need it, yet the AIDS wards were full of dying young women and men. I couldn't figure out why. It had to be a failure of the public health system.

**Dr Alan Finkel:** The theme of global health also appeals to me because I am an outcomes oriented person. When there are so many health issues to deal with, one of the most practical places to start is with those health problems that are preventable. In particular, communicable diseases in developing countries can be prevented by good health practices and a deep understanding of the social and health services shortcomings that have led to these diseases getting out of control.

**In 20 years time, what do you hope that the Chair will have achieved?**

**EF:** I hope that they will have been able to capitalise on what Monash has already put in place, including the campuses in South Africa and Malaysia. When we were in South Africa in February I was so inspired and moved that Monash was involved in South Africa's development. I hope this Chair will

take advantage of what's already in place, build on public health measures and apply expertise that's developed at Monash, using data from South Africa and Asia.

**AF:** I will be extremely pleased if I can see that the research contributed to a change in policies and practices, in one or more of the governments around the world, that actually helped prevent disease.

**What does the word philanthropy mean to you?**

**AF:** It means investing in the community that underpinned your own achievements. You have a bit of success in your life and achieve some goals and you find that you want to give back. One way I give back is by investing my personal time and effort on education. *[Dr Finkel is also involved with a number of education-related activities and projects outside Monash University.]*

Another way of giving back is financially and I think we have an obligation to do that. To me philanthropy is giving back to the community that has supported me and helped contribute to my success.

**EF:** For me philanthropy is a little more seamless with what I do. Through journalism I try to do public good in providing good, objective information. Public good is the way I approach journalism, and philanthropy is about public good.

**Through your Foundation you support a wide range of causes and projects. How do you choose what to support?**

**AF:** Fundamentally, we support things that we find personally interesting. Given our backgrounds the projects are often in health, science, engineering, education, development and community engagement. For example, we have supported the educational officer of the Koori Museum and the educational officer of the Jewish Museum. We give to things that we believe in.

We have tried to give our money to areas that interest us but also where we see some sort of multiplicative effect. We prefer to give our money to a research or educational activity that will build the capacity of a researcher or build the capacity of a student. They can then do so much more, in the long-term. Leveraging, through education, is an important part of what motivates us.

**EF:** Before Alan became Chancellor, neither of us really thought about universities as a destination for philanthropy. Now that fate has positioned us where we are, I ask myself: why isn't the philanthropic community alive to this? What better place is there to invest in for public good? Who else is going to do the research about issues like climate change, feeding the world, water shortages, and emergent diseases? Where are you going to find solutions to those problems? You are only going to find them at universities.

**Tell us about your recent donation to establish the Finkel PhD Scholarships in Engineering at Monash University. The scholarships are 'top-up' scholarships that add to the recipients' Australian or Monash PhD scholarships.**

**AF:** Australia's core research system depends on HDRs (Higher Degree by Research students), primarily PhD students, to do the

research. They are undertaking the research that will ultimately improve our economy and wellbeing through innovation.

There is a shortage of PhD students nowadays for a number of reasons including demographics and the many attractive job opportunities resulting from the strong economy.

The top-up scholarships mean that the students can concentrate on their research more and not have to spend so much time working for income.

I feel we are achieving something important through that donation. It's very multiplicative. With a relatively small amount of money we are enabling somebody to do research that might not otherwise be done. It's for the long-term benefit of the country. It's for the benefit of the University. And it's to the enormous benefit of that student.





**Left to right:** Dr Fiona Cochrane, 2008 recipients Mr Jason Ng, Mr Alexander Nichols and Mr Yuchao Xiao, Dr Andrew Cochrane and Professor Owen Hughes

# A tribute to excellence

When Andrew and Fiona Cochrane wanted to celebrate the legacy of their late father, distinguished economist Donald Cochrane, they turned to Monash University.

The siblings created a prestigious scholarship to honour Emeritus Professor Donald Cochrane CBE (HonDEc 1982), the founding Dean of the Faculty of Economics and Politics (now Business and Economics) at Monash University. Each year the scholarship provides opportunities for several outstanding PhD students.

Professor Cochrane played a significant role in the development of the Faculty and the University, serving from 1961 to 1981. He passed away in 1983.

“Fiona and I thought that a Monash scholarship would be a suitable way to honour our father who had been so involved at Monash University in its early days,” said Dr Andrew Cochrane.

“We were keen to both commemorate his work and name, and to provide financial support for students to pursue higher research,” he said.

Under Professor Cochrane’s guidance, Monash University grew to be recognised as a leading centre of economics research and teaching. Professor Cochrane’s contribution was recognised with a CBE in 1975. In 1982, Monash University conferred Professor Cochrane with its very first honorary Doctor of Economics degree.

The Donald Cochrane Postgraduate Research Scholarship commemorates his inspirational scholarly excellence, and is one of the most sought-after scholarships available at Monash.

Through the Trustees of the Cochrane-Schofield Charitable Fund, the Cochrane family has given a generous \$60,000 per year towards the scholarship. Thanks to their support, each year the scholarship is awarded to two talented PhD students within the Faculty of Business and Economics.

The Cochranes hope that the scholarship will encourage students to address some of the world’s current economic challenges.

"We would like to see some of the recipients addressing important economic issues related to growth and development in poorer countries, the environment, health systems, and equity," said Dr Fiona Cochrane (MBBS(Hons) 1980).

The current scholarship recipients are certainly fulfilling this aim with the research work of Kristian Rotaru and Jason Ng having applications that could help hospital patients.

Inaugural Donald Cochrane scholarship recipient Kristian Rotaru is investigating operational risk and believes his work will be helpful to organisations including banks, chemical plants and hospital emergency departments.

Mr Rotaru, who is in the later stages of his thesis, is honoured to have been selected as the scholarship's first beneficiary in 2006.

"When I heard that I would receive the Donald Cochrane PhD Scholarship, it was an explosion of all sorts of emotions: surprise; joy; warm gratitude; and also a feeling of deep satisfaction that my research achievements were recognised so highly," Mr Rotaru said.

"I was truly honoured to be awarded the scholarship that commemorates the achievements of Professor Donald Cochrane as an academic and Foundation Dean of the Faculty of Economics and Politics."

Jason Ng (BCom(Hons) 2007), a 2008 scholarship recipient, is part-way through his thesis that looks at data arising from complex, time-dependent sources. Mr Ng hopes his research will improve financial market analysis data. It could also help health service planners to forecast accident and hospital admissions.

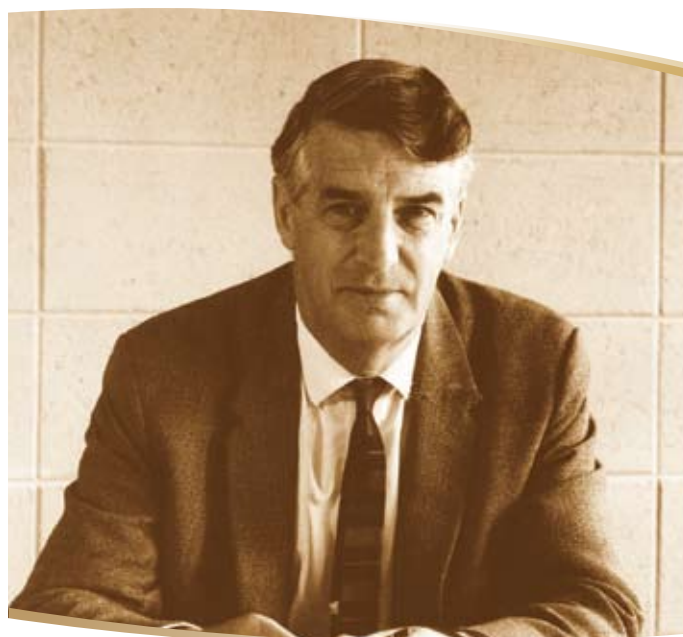
Mr Ng is extremely grateful to have received the scholarship, particularly because it allows him to study without having to work part-time to support himself.

"Honestly, I was shocked to find out that I had been awarded the Donald Cochrane PhD Scholarship as it is a very prestigious scholarship ... [The scholarship] is definitely a positive step forward in encouraging students to pursue a higher degree in research," Mr Ng said.

"This scholarship has enabled me to be financially independent. In a world of increasing economic and financial uncertainty, this scholarship has made my financial situation the least of my (and my parents') worries."



Kristian Rotaru, 2006 scholarship recipient



The late Emeritus Professor Donald Cochrane CBE

### Your role in supporting excellence

Monash University has launched an appeal to create a third scholarship in memory of Professor Cochrane. Your support will help sustain Donald Cochrane's legacy, while helping exceptional students to pursue innovative research. To donate to the Donald Cochrane Postgraduate Research Scholarship visit [www.monash.edu/giving/cochrane](http://www.monash.edu/giving/cochrane)

Through philanthropy, Monash University is able to offer undergraduate and postgraduate scholarships in all faculties. To donate today, visit [www.monash.edu/giving](http://www.monash.edu/giving) and select one of our ten faculties.

# New program honours a passionate supporter

Inspired by the life and work of an extraordinary supporter, Monash University recently launched a new program to recognise the service and philanthropy of the late Roslyn Smorgon AM.

The Roslyn Smorgon Program in Jewish Communal Service and Leadership in the Australian Centre for Jewish Civilisation will prepare students for leadership positions in the Jewish community.

Dale Smorgon, speaking on behalf of his father David Smorgon OAM, siblings and family, reflected on his mother's contribution and devotion to community, health and education causes.

"She had such great passion for the Australian Centre for Jewish Civilisation. She would be thrilled to see the depth and strength of the Centre's curriculum," Mr Smorgon said.

"She had a rare ability to inspire others and a clear vision to empower, educate and enable the next generation of community leaders. There could be no more fitting program to honour her memory. It will help to ensure the continuity of the vital organisations that serve to strengthen our community."

"Our family is very proud to be financially supporting the new program."

Coordinator of the new program, Melanie Landau explained that the program encompasses professional development training, consulting, graduate programs and the Master of Jewish Communal Service and Leadership.

"In the same flavour as other Centre endeavours, this program will be at the cutting edge of University programming, bridging between different faculties and reinforcing our already strong relationships between the University and the community," Ms Landau said.

Monash University Vice-Chancellor Richard Larkins AO said that the program reflected Roslyn's commitment, enthusiasm and her contribution to the Centre.

"Roslyn had achievements in so many areas of community service, and the Australian Centre for Jewish Civilisation was just one of her areas of service. She was a wonderful supporter of Monash and everyone at the University owes her a particular vote of thanks. I can't imagine a more appropriate tribute to Roslyn's service throughout her life than a program in communal service and leadership," said Professor Larkins.



The late Roslyn Smorgon AM

"The Centre is a very good example of a partnership between the community and the University to advance scholarship and to advance community engagement. I am delighted that the Centre has grown so substantially in size and activity."

In a handful of years, the Centre has grown from an idea to a flagship entity of Monash University. The Centre's 18 staff includes four research chairs that have been endowed by the philanthropy of the Jewish community. The staff deliver an enviable suite of education and research in the field of Jewish studies. This achievement is entirely thanks to the commitment and focus of the Centre's volunteers, donors and staff and the support of the community.

Centre director Mark Baker believes that the status of the Centre today was made possible by Roslyn's work.

"The Centre only exists because of Roslyn. She has created a legacy in the people here, in this new program and in the foundation of the Centre. She built something based on a clear vision and today we teach close to 1,000 students each year," Associate Professor Baker said.

"Roslyn recognised the transformative power of education and knowledge. She also taught us about service and leadership. She showed us that a leader is someone who knows how to give and how to serve."

"The new Roslyn Smorgon program is a way to continue her legacy."

#### Your role

By donating today to the Australian Centre for Jewish Civilisation you will help to ensure that the Roslyn Smorgon Program, and the Centre's research and education work, continues to thrive long into the future. Roslyn worked to ensure the Centre was established and had a solid basis to grow and flourish. Your support will help to guarantee the Centre's sustainability and longevity. Donate online by visiting [www.monash.edu/giving/acjc](http://www.monash.edu/giving/acjc)

To find out more about the Roslyn Smorgon Program in Jewish Communal Service and Leadership, visit [www.arts.monash.edu/acjc/graduate-school/communal-service.php](http://www.arts.monash.edu/acjc/graduate-school/communal-service.php)

David Smorgon OAM and family.  
From left: Ellie, Dean, Melanie, Dale, David,  
Amanda, Isabella and Ricky Smorgon



# Foundation gifts link art and education

Through the generosity of three of Melbourne's most prominent philanthropic foundations, Monash University Museum of Art | MUMA will move to new premises at the University's Caulfield campus in 2010.

Building works will commence in 2009 to create MUMA's new home. The new facilities have been made possible through major gifts from donors including the Ian Potter Foundation, The Myer Foundation and the Helen Macpherson Smith Trust. MUMA's move from Clayton to the University's Caulfield campus will have major benefits for the Museum, students, staff and the wider community, offering greater access to the Museum's exhibition and education programs, as well as to the Monash University Collection.

While the University has financially supported MUMA's move to Caulfield, matching donor funds are needed to ensure that the project is fully realised. The Ian Potter Foundation has made a philanthropic grant of \$1 million, over five years, to the Museum. Janet Hirst, CEO of the Ian Potter Foundation, said that the project fits closely with the Foundation's aims.

"The Foundation's Arts objectives specifically focus on the support of major Australian cultural institutions, of which MUMA is clearly one, and on the linking of education and the arts, and this Gallery uniquely fits that criterion. It is distinctive, innovative and will add to the fabric of Australia's cultural life, all of which made it an ideal project for us and one we are very proud to have been able to support," Ms Hirst said.

MUMA's new sculpture courtyard will be named in honour of the Ian Potter Foundation to recognise and celebrate the Foundation's support.

MUMA director Max Delany believes that a highlight of the new facilities will be the display of the Monash University Collection, alongside MUMA's program of changing exhibitions.

"Something of a hidden treasure, the Monash University Collection is one of the nation's leading collections of contemporary Australian art since the 1960s, and now numbers some 1500 works. In our current premises, we don't have dedicated space to permanently display works from the Collection," Mr Delany said.

"The new MUMA at Caulfield will present changing displays of the Monash University Collection, in a dedicated gallery space. A second suite of galleries will feature a program of changing exhibitions."

"We are very grateful for the significant support of these prominent foundations and trusts. Their philanthropy means that we can realise the full scope of the curatorial and architectural vision for the new facilities."

As Monash University's Faculty of Art & Design is located at the Caulfield campus, the Museum's move will bring additional opportunities for teaching, learning and research in the visual arts.

The Helen Macpherson Smith Trust is supporting the project with a \$200,000 grant, given over two years. In recognition, the Helen Macpherson Smith Education Space will be the focal point for MUMA's primary, secondary, tertiary and community education programs.

"The Helen Macpherson Smith Trust makes grants only for the benefit of future generations of Victorians, and wanted to support Victoria's reputation as a leading centre for contemporary art by contributing to this one-off capital appeal for MUMA," said Mr Darvell M Hutchinson AM, Chairman of the Helen Macpherson Smith Trust.

"The trustees felt that a new art museum to house Monash University's growing collection of Australian contemporary art would be a significant benefit not only to undergraduates, but to the people of Victoria, more so as the new museum's location at the Caulfield campus will be more accessible."

Through the Sidney Myer Fund, The Myer Foundation has made a \$400,000 philanthropic gift to support the project.

"We believe that there is a strong connection between the arts, the humanities and a healthy community. Through the Sidney Myer Fund we are very pleased to be able to support the development of the new Caulfield home for the Monash University Museum of Art," said Christine Edwards, CEO of The Myer Foundation and Sidney Myer Fund.

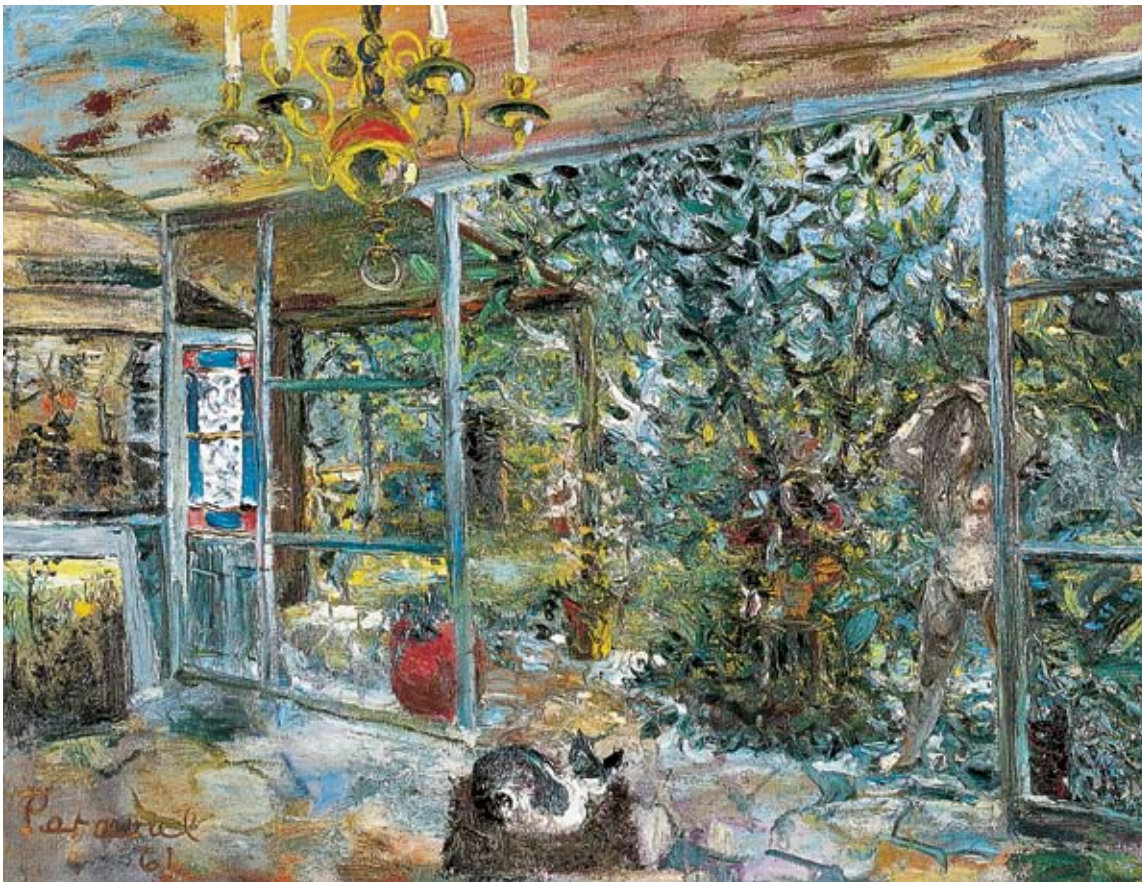
"With its significant collection, and as one of the most important fine arts institutions in Australia, the new MUMA site will provide access and opportunity to a broad range of community members."

MUMA director Max Delany is looking forward to the extra benefits of the Caulfield location.

"Caulfield is much easier for community members to access, with good public transport, and inner city location. The new facilities and programs will attract and engage an increased audience and welcome new patrons and supporters, as well as encourage enhanced research and links to academic programs."



**Nadine Christensen**  
***Glass Minnow* 2001**  
 Synthetic polymer paint  
 on board  
 50.5 x 61.0 cm  
 Monash University  
 Collection  
 Purchased 2002



**John Perceval**  
***The artist's studio* 1961**  
 oil on canvas  
 91.7 x 119.8 cm  
 Monash University  
 Collection  
 Purchased 1964

### Your role in linking arts and education

Your support for Monash University Museum of Art will help to showcase the Monash Collection to the Monash community and beyond. To make a donation to MUMA visit [www.monash.edu/giving/muma](http://www.monash.edu/giving/muma)  
 You can also support research and education into the visual arts by giving to the Faculty of Art & Design via [www.monash.edu/giving](http://www.monash.edu/giving)  
 To read more about MUMA visit [www.monash.edu/muma](http://www.monash.edu/muma)

# 50 years of volunteering

Through his commitment to Monash University and the Victorian College of Pharmacy Foundation, Alistair Lloyd AO RFD ED (PhC 1956) has donated a truly significant gift – his time. Over the past half century he has personally demonstrated the impact that volunteering can have on an institution like Monash.

After completing his pharmacy training in 1956 at the Victorian College of Pharmacy (now Monash's Faculty of Pharmacy and Pharmaceutical Sciences), Mr Lloyd went on to become a successful pharmacy professional. During this period, he found time to serve as a volunteer on the various managing bodies of the Victorian College of Pharmacy. For 18 years he was a member of the Council of the Pharmaceutical Society of Victoria, the body then responsible for running the College. He also served as its president for three years.

Since his retirement in 1998 he has continued his generous work with staff, students and alumni of the Faculty. Like most volunteers, Mr Lloyd's involvement with Monash was driven by a desire to give back to an institution that nurtured him in his early days.

"After a long and fulfilling career in pharmacy, I wanted to make a contribution to the profession and to the College that had given me that opportunity," Mr Lloyd said.

Among his major achievements are being closely involved in the merger in 1992 between the Victorian College of Pharmacy and Monash University and co-founding the Victorian College of Pharmacy Foundation in 2001.

Mr Lloyd, with Neil Naismith AM (PhC 1958) and John Ware OAM (PhC 1950), established the Foundation to develop a formal and ongoing relationship with pharmacy alumni and to ensure that the College would have the financial means to provide world-class teaching and research.

As chair of the Foundation, Mr Lloyd has formed and strengthened ties with alumni and established a number of student–alumni engagement initiatives. These include setting up professional development workshops for pharmacy alumni in rural and regional Victoria, launching the Faculty's first bequest program (the Cossar Club) and initiating the Student Leaders' Function, an annual event where Faculty students are given the opportunity to network with leaders from the pharmacy community.

Professor Bill Charman (BPharm 1981), Dean of the Faculty of Pharmacy and Pharmaceutical Sciences, believes Mr Lloyd has played one of the most influential and guiding roles in the Faculty's development.

"He is pharmacy's Don Bradman – his tireless efforts and contributions have made our Faculty, Foundation and alumni networks the strong and vibrant programs they are today," Professor Charman said.

In 2008, the University formally recognised Mr Lloyd's contribution with a Distinguished Alumni Service Award. The Award is presented in recognition of an individual's contribution to Monash University through their participation in alumni and University activities, student

engagement, promotion of Monash in the broader community and strengthening of alumni communities.

Pharmacy Board of Victoria Registrar Steven Marty (BPharm 1970), who nominated Mr Lloyd for the Award, considers him a most worthy recipient.

"Mr Lloyd is one of a few highly respected elder statesmen of the pharmacy profession. Through his personal enthusiasm, leadership and desire to progress all aspects of the profession, and in particular its future through its graduates, he is a tireless driver to maintain the momentum now established in the Faculty and Monash University," Mr Marty said.



2008 Distinguished Alumni Service Award recipient Alistair Lloyd

The work of volunteers like Mr Lloyd has generated pride amongst alumni of the Faculty. It has also motivated others to give their time or money to Monash in areas where they would like to see University excel.

“Activities of the Foundation are leading to a growing awareness that to achieve the excellence alumni hope for and expect from the Faculty, it needs support from donors and volunteers. Relying only on government funds will not allow the Faculty to achieve what is required to remain a world-leading school of pharmacy,” said Mr Lloyd.

Mr Lloyd believes that, with enough philanthropic support, Monash can reach the standards of leading international universities.

“Leading universities in North America and Europe that are recognised and accepted as the truly great ones are those that have significant private endowments that allow them to be flexible and innovative in what they do. They therefore tend to attract the highest quality students and staff, and are undertaking research at the highest level,” he said.

Mr Lloyd’s commitment to the Faculty has remained strong, throughout his life and busy professional career.

“Despite the demands of business, time can always be found to make a contribution to one’s calling. It is just a matter of wanting to, setting priorities and managing one’s time.”

“I believe that making the Faculty and the University as successful as possible is a most worthy cause to apply my time and energy.”

### Thanks! to our foundation, board and committee chairs

Monash University is very grateful to those who volunteer their time, energy and expertise to our foundations, advisory boards and committees. Particular thanks go to our chairs and presidents. Thank you for your leadership, your patience and your wisdom.

- Dr Alan Finkel AM (BE 1976, PhD 1981) – Chancellor, Monash University Council and Chair of the Board, Child Abuse Prevention Research Australia; Honorary Patron, Monash Alumni Advisory Group (MAAG)
- Mr Rod Chadwick – Chair, Monash University Medical Foundation
- Emeritus Professor Peter Darvall AO (DipEd 1973, HonLLD 2005) – Chair, Monash Engineering Foundation
- Mr Ian Dench – Chair, Australian Pulp & Paper Institute Foundation
- Professor Rae Frances (PhD 1995) – Chair, Herb Feith Foundation
- Dr Sam Lipski AM (HonLLD 2008) – Chair Australian Centre for Jewish Civilisation Advisory Committee
- Mr Alistair Lloyd AO RFD ED (PhC 1956) – Chair, Victorian College of Pharmacy Foundation
- Dr Rod Maddock – Chair, Department of Economics Advisory Board
- Mr Trevor O’Hoy (BEc 1976) – Chair, Monash University Campaign
- Mr Ian Pyman (BJuris 1974, LLB 1975) – Chair, Monash Law School Foundation
- The late Mrs Roslyn Smorgon AM – Chair, Monash University Foundation for Jewish Studies (to January 2008)

Alumni chapters and groups:

- Ms Melanie Anderson (BE(Ind&Man) 2006) – Industrial Engineering and Engineering Management Alumni Council
- Associate Professor Bill Brown – Society of Monash Electrical Engineering Alumni (DipEng(Elec) 1958, DipEd 1978)
- Dr Sally Cockburn (MBBS 1982) – Medicine, Nursing and Health Sciences Alumni Committee
- Mr Mark Hillebrand (BBus(Mktg) 1988) – Monash University London Alumni Chapter
- Mr Pakpong Kawprasert (MBA 2000) – Monash University Alumni Association Thailand
- Mr Charles Lee (BE(Civ) 1982) – Monash University Alumni Association Singapore
- Ms Kaylene O’Shea (GradDipBus(Mgt) 1995, MMgt 2002) – Monash Alumni Association Incorporated
- Mr Timothy Sze (MBusSys 2000) – Monash University Hong Kong Alumni Association
- Mr Sam Won (GradDipBusSys 1994) – Monash Korea Club
- Ms Carol Yip (BEc(Hons) 1988) – Monash University Alumni Malaysia

# Volunteers unite against child abuse

In August 2008, a group of dedicated volunteers ensured the success of a Monash University event to raise money for the prevention of child abuse in Australia.

Board members and supporters of Monash University's Child Abuse Prevention Research Australia organised and launched the group's 'Protect and respect the child' campaign at a gala dinner in Melbourne. More than 350 people attended the dinner and more than \$200,000 was raised.

Child Abuse Prevention Research Australia provides evidence-based advice to government and child health organisations with the aim of reducing the rate of child abuse, neglect and murder in Australia.

Jasmine Dindas, Chair of Child Abuse Prevention Research Australia Fundraising, paid tribute to board members and other volunteers.

"It was great to work with people who are dedicated and focused in ensuring that the best possible outcome is achieved. Young people who volunteered their time – including performers Ariella Jacobs and Richard Lipp – just took the evening to another level," Ms Dindas said.

"When Dr Alan Finkel approached me, I embraced the opportunity to join him on the Board of Child Abuse Prevention Research Australia. After 17 years of working closely with children as a volunteer for the Royal Children's Hospital, I feel deeply connected to the issue of child welfare."

The Board of Child Abuse Prevention Research Australia is: Dr Alan Finkel AM (Chair), Professor Chris Goddard (Executive Director), Dr Ken Coghill, Ms Jasmine Dindas, Ms Tania de Jong AM, Ms Kirsty Hamilton, Mr Jamie Perrott, Professor Leon Piterman AM, Dr Joe Tucci and Mr Allan Zavod. Dr Sally Cockburn and Dr Bill Rogers AO retired from the Board in late 2008.



Jasmine Dindas

---

# Engineering a successful career

Over the last two years, more than 100 undergraduate engineering students have taken part in a special program to help them develop as leaders.

The Faculty of Engineering's leadership program focuses on leadership and communication skills and is designed to extend and challenge high-achieving students, complementing their studies in engineering disciplines. First-year students are invited to be part of the program, based on their Year 12 results. Second-year students can apply to participate.

The leadership program begins with a two-day residential induction workshop and is followed by nine topic modules over three years, plus regular seminars and activities with industry and research leaders.

Associate Dean (Teaching) Associate Professor Gary Codner said that the involvement of alumni and other volunteers has been crucial to the program's success.

"Monash alumni and our other volunteers act as guest speakers during the induction and give talks as part of the modules. The students gain a great deal from hearing about the challenges and opportunities of a career as an engineer," Associate Professor Codner said.

"In Phase 1, students also have the opportunity to 'shadow' engineers in their workplace and experience the day-to-day requirements of the profession, while in Phase 2 they spend a week working within an engineering organisation. I would like to thank all volunteers who have been part of the leadership program."

To learn more about the program visit [www.eng.monash.edu.au/current-students/merit/leadership/](http://www.eng.monash.edu.au/current-students/merit/leadership/) or contact Teri Foster, Manager, Special Projects on 03 9905 9906, or email [teri.foster@eng.monash.edu.au](mailto:teri.foster@eng.monash.edu.au)



# Volunteer highlights

## Dr Leanne Rowe AM (MBBS 1980, MD 2006)

**Member, Monash University Council and Deputy Chancellor, Monash University**

What personal sense of satisfaction do you draw from your role as a Monash University volunteer?

"I remember one time I was presenting to final year medical students. After my presentation two young women approached me and said that they had never considered rural general practice as a career path before, but that now they were considering doing so. That really touched me. That was important to me and I could see that my presentation was important to them."



## Mr Trevor O'Hoy (BEC 1976)

**Chair, Monash University Campaign**

What have been the highlights of your time volunteering with Monash University?

"The highlights have been the site visits – to get behind the scenes to see the work that Monash is doing in research and education. And more importantly to see the high energy of the people involved in Monash. It's certainly a very rewarding thing in itself."



## Ms Kaylene O'Shea (GradDipBus(Mgt) 1995, MMgt 2002)

**President, Monash Alumni Association Incorporated**

How did your volunteering at Monash University come about?

"I found that I wanted to give something back to the University... I didn't quite know what I wanted to do but I did want to continue my connection with Monash. The Monash Alumni Association Incorporated approached me to see if I would be interested in working on the committee of management and it was too good an opportunity. It gave me everything that I needed – volunteering, connection with the University and meeting new people. So it just all fitted together beautifully, so I jumped at the opportunity. Volunteering has changed my life."



## Mr Paul Ramler AM (DipBus(Mktg) 1974, HonMBus 1990)

**Member, Monash University Council and Deputy Chancellor, Monash University**

Why is volunteering important?

"I think everybody wants to give back, whether they want to give back to their school or their community or society in general. People have a feeling that they want to contribute. By getting involved with Monash, that's an excellent way to give something back."



## About Thanks!

**Thanks!** is Monash University's newsletter to recognise donors and volunteers. It is published by Donor, Alumni and Community Relations, Office of the Vice-President (Advancement), Monash University.

**Editorial team:** John Kearsey, Sophie Marcard and Penny Rankin

**Cover photo:** Melissa Di Ciero and Greg Ford

**Contact Thanks!**

**Telephone:** +61 3 9903 1608

**Donate to Monash University online:** [www.monash.edu/giving](http://www.monash.edu/giving)