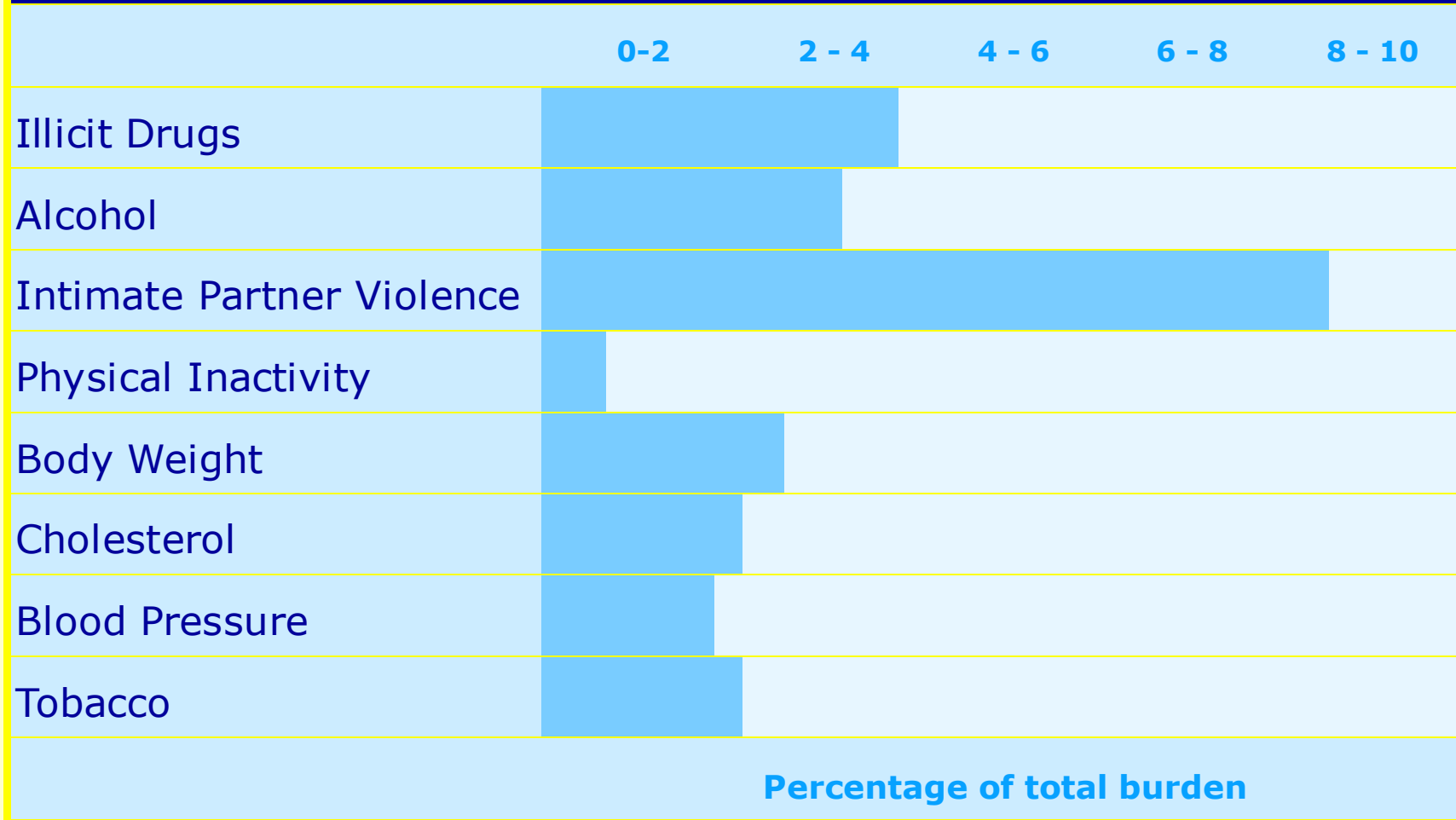


Top 5 Ambulatory Sensitive Conditions Frankston / Mornington Peninsula

	No. admissions	Rate per 1,000	Total bed days
Diabetes Complications	4,431	14.38	21,420
COPD	1,020	3.04	7,420
Dehydration and gastroenteritis	836	3.02	2,582
Angina	964	2.96	1,842
Dental Conditions	721	2.76	824

Your Health: A report on the health of Victorians Published by the Victorian Government Department of Human Services, Melbourne Victoria December 2005

Top 8 Risk Factors contributing to the disease burden in Victorian women aged 15 - 44 years



The Health Costs of Violence: Measuring the Burden of Disease Caused by Intimate Partner Violence, VicHealth June 2004

Health Promotion Priorities

- . Cardiovascular disease
- . Diabetes mellitus
- . Cancer
- . Asthma
- . Injury and poisoning
- . Mental health

Health Related Behaviours

- . Smoking
- . Nutrition
- . Alcohol consumption
- . Physical activity/
inactivity

Your Health: A report on the health of Victorians, DHS 2005

Social Model of Health



Primary Health Sector

Medical Model of Health



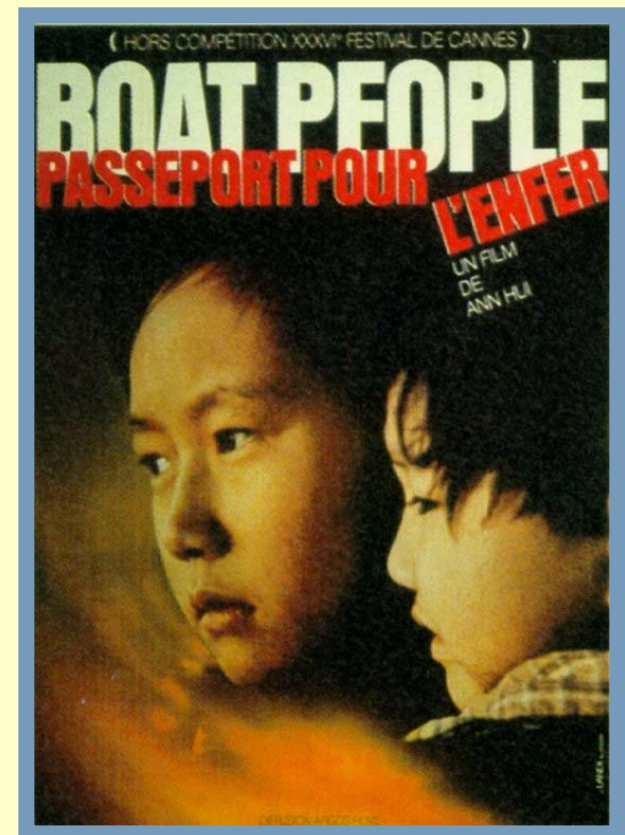
Acute Sector

The Social Determinants of Health are

1. The social gradient
2. Stress (including that arising from poverty, isolation and violence)
3. Early life
4. Social exclusion
5. Work
6. Unemployment
7. Social support
8. Addiction
9. Food
10. Transport

Additional determinants of health identified by Keleher (2001)

11. Gender
12. Sexuality and discrimination
13. Personal health practices, coping skills



Passport to hell....